

# Newsletter



Dear Malvern Families,

At Malvern, we provide our learners with the very best start to their education. We understand that, when pupils attend school regularly, they cultivate deeper friendships and their academic outcomes improve.

This understanding underpins our whole school attendance strategy and informs our belief that 'Every Day Counts'. Celebration of outstanding attendance is key to our philosophy. When attendance falls below expectations, we follow established systems to support families to make improvements quickly. At the earliest opportunity, we enable families to meet their legal duty, secure in the knowledge that their child is understood and well supported.

When there are specific problems with attendance, we take a carefully managed approach and seek to understand, encourage and support children to attend school every day. Future decisions about the need for enforcement measures are made on a case-by-case basis, recognising individual circumstances and always seeking to reduce absenteeism and maximise opportunities to attend school.

If you would like to learn more about the importance of attendance please take a look at our attendance strategy document which can be found on our website under the 'About Us' section.

Kind regards,

Mr James

Headteacher

### AFFIRMATION

WHAT DOES CELEBRATION LOOK LIKE AT MALVERN? ?

**I won a PSM!** Celebration of achievement is an integral aspect of our emotional diet at Malvern and it feeds our appetite for progress. In line with our wider school culture and philosophy, we celebrate our pupils at every opportunity. This takes many forms and includes our exciting termly attendance raffle. These raffles contain prizes selected by our Junior Leadership Team. Lucky winners attend a variety of trips and days out including to theme parks, soft play centres, climbing walls, safari parks and theatre productions.

**I won my football merchandise!**

**I chose my own book!**

**I won a Malvern Swift!**

**I've had fun at the fair!**

### The MALVERN Way

**TIER ONE SUPPORT**

**+95% SELF MONITORING** You are on track for excellent attendance. **Actions:** Attendance Staff, Celebration Assembly, First Day Resourse.

**TIER TWO SUPPORT**

**+91-94% PASTORAL MONITORING** Your attendance has fallen below expectation and must improve quickly! **Actions:** Pastoral Support, Letter of Concern, Tier 2 Monitoring, Attendance of Progress.

**TIER THREE SUPPORT**

**-90% MENTOR MONITORING** You are considered persistently absent and must improve attendance immediately! **Actions:** Pastoral Meeting, Parental Agreement, Respite Support, Early Help / School Nurse, Behaviour & Inclusion!

**TIER FOUR SUPPORT**

**-80% SLT MONITORING** You are persistently absent from school and require external support to improve! **Actions:** Children's Social Care.

**TIER FIVE SUPPORT**

**-80% LA MONITORING** Your attendance has not improved and you are at risk of prosecution. **Actions:** Notice of Prosecution.

#Where GREATNESS grows

## ATTENDANCE

PROMOTING ACADEMIC EXCELLENCE

**THE WAY WE DO THINGS AT MALVERN**  
KEY GUIDANCE AND INFORMATION

### DATA

WHAT DO WE KNOW ABOUT OUR SCHOOL?

Attendance Overview (September 2022 - June 2023) \*Data harvested 10/6/23

Data Set	All Pupils	Female	Male	FSM	SEND	EHCIP
FTT National	93.8%	94.0%	93.7%	93.4%	92.2%	93.2%
Malvern	94.9%	95.5%	95.2%	93.0%	93.5%	93.3%
Difference +/-	+1.1	+0.5	+1.5%	+0.6%	+1.5%	+0.1%

Attendance Summary (September - June)

Persistent Absence Rate

Year Group Analysis

We are proud to have been awarded the FTI National School Attendance Award twice in the last academic year. Our intent is to reach our ambition of 97% whole school attendance within our next School Development Planning Cycle.

### DIMINISHING BARRIERS

WHY ATTENDANCE MATTERS

We believe that by improving attendance we will:

- Ensure more children and young people have a happy and enriched life experience;
- Enable children and young people to achieve more at school academically, emotionally and socially;
- Help children build positive, long lasting friendships and lead happy lives;
- Improve mental health and wellbeing of children and families;
- Reduce child exploitation and abuse, anti-social behaviour;
- Help children and families prosper socially and economically;
- Increase chances of success in further or higher education or apprenticeships;
- Reduce the demand for support services;
- Improve lifestyles and better prepare our young people for adulthood and the world of work.

## Parent Council Meeting

On Thursday 5th October, we will be hosting our first Parent Council meeting of the academic year and we would like to extend a warm welcome to any new parents who would like to join us. The Parent Council meet once a half term and work in partnership with school leaders to further enhance opportunities for our children.

Please see meeting details below:

**Topic:** Parent Council Meeting

**Date:** Thursday 5th October 2023

**Time:** 7:00 PM

**Meeting ID:** 833 079 2853

**Meeting Link:** <https://us06web.zoom.us/j/8330792853?pwd=OYVB1Km5VQQ3G5i4fIGMFDZI3yQWBJ.1>

If you would like to join our wonderful Parent Council please contact school at:

[parentcouncil@malvernprimaryschool.co.uk](mailto:parentcouncil@malvernprimaryschool.co.uk) and the passcode for the meeting will be shared with you.

#TogetherStronger  

## Saturday Morning Football @ Malvern

At Malvern, we are committed to providing our community with as many sporting opportunities as possible. Therefore, we are delighted that Saturday morning football sessions, hosted in collaboration with South Liverpool Community Coaching, will continue throughout this academic year. The sessions are open to all children and will be held every Saturday from 9.00am to 11.00am.

The training sessions are run by experienced football coaches who are dedicated to providing a safe and fun environment for children to learn and play the beautiful game. Children of all skill levels are welcome to join and the coaches will work with each child to help them develop their skills, build confidence and learn the value of teamwork.

We encourage all parents to consider signing their children up and giving them the chance to experience the joy of playing football. For more information and to register for the sessions, please contact Bradley at 07921663447 or visit: <https://www.southliverpoolcc.co.uk/> for further information.



#Where  GREATNESS  grows

# Musical Mondays

St Edmund Arrowsmith Catholic Academy,

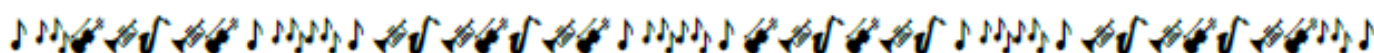
Cumber Lane, Whiston, L35 2XG

Free to attend instrumental groups with free loan of instrument to take home!

## Tutti

For beginners aged 8 and over on any instrument

Mondays 4:00pm – 5:00pm during school term time



## Forte

For Orchestral Instruments Grade 1 standard and above

Mondays 5:30pm – 7:00pm during school term time



To register your interest or for more information, please contact Phil Nicholas by email [phil.nicholas@knowsley.gov.uk](mailto:phil.nicholas@knowsley.gov.uk) or telephone 07815 722291