

Newsletter



Dear Malvern Families,

It was wonderful to welcome so many families to school last weekend to enjoy our Santa Spectacular 2023 event. It was a delight to see so many members of our Malvern community getting into the festive spirit and enjoying the many market stalls and attractions on offer.

The success of events like the Santa Spectacular is a testament to the collective effort, determination and dedication of individuals within our school community. I extend my sincere appreciation to Mrs. Shields, our esteemed 'Head Elf,' whose leadership and organisational skills once again played a pivotal role in orchestrating the event. Special recognition is also due to Mr. and Mrs. Taylor for their tireless efforts during the event's build-up, demonstrating unwavering commitment to its success. We are also very grateful to all school colleagues, parent volunteers and students who lent their support throughout the build up and over the weekend. This collective approach really showcased the strong sense of community that defines our school.

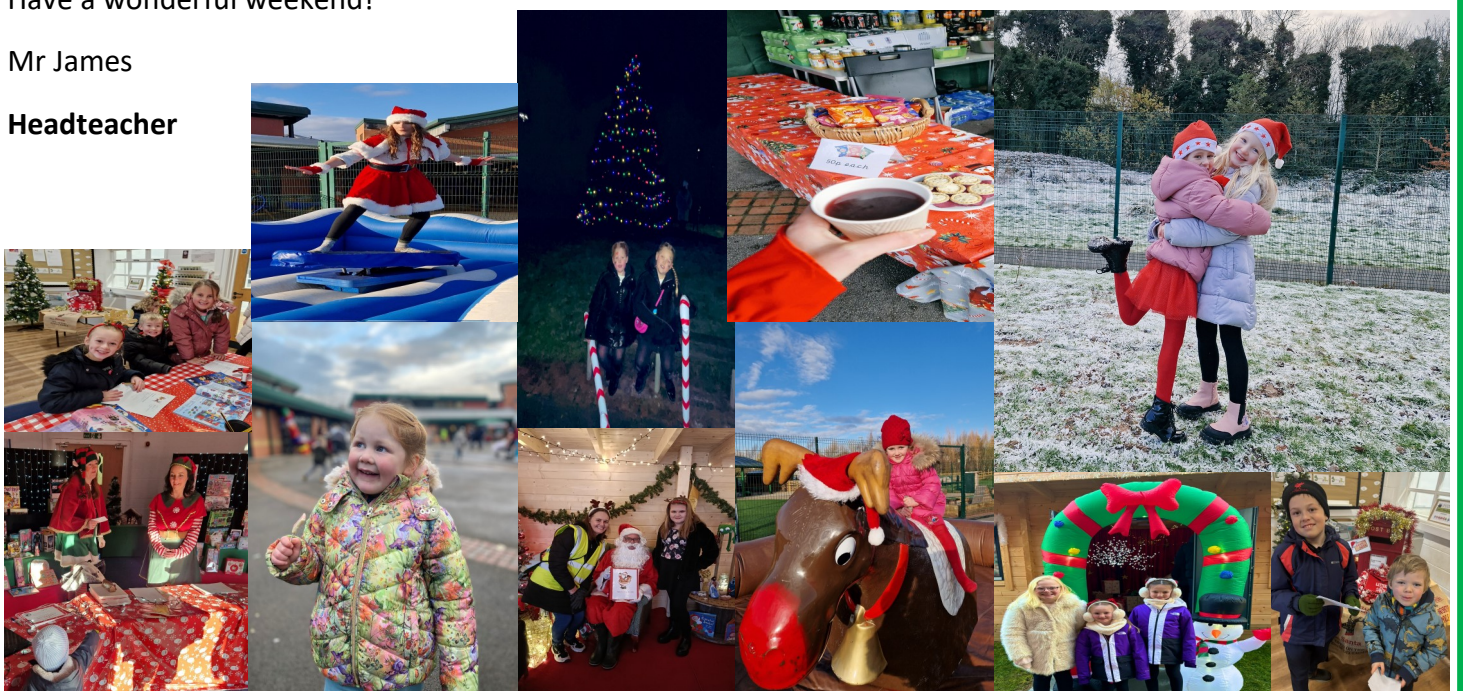
Furthermore, we express deep gratitude to Next Energy for their continued and generous sponsorship of our event. Next Energy are fantastic supporters of Malvern and always go above and beyond to support our families. In addition, we would like to thank Huyton Civils for their pivotal role in the seamless installation of our Christmas Tree. Huyton Civils - and their wonderful team of contractors - have supported school on many occasions and always provide an outstanding service. Lastly, heartfelt thanks go to Knowsley Council and our local councillors for their ongoing generous support.

As we reflect on the collective achievements and shared joy of the Santa Spectacular, I encourage our school community to carry this festive spirit forward into the remaining weeks of the term.

Have a wonderful weekend!

Mr James

Headteacher



Christmas Performances

This week, the spirit of Christmas came alive as we were treated to magical performances by our youngest stars in Early Years Foundation Stage (EYFS) and Key Stage 1. The Christmas presentations were nothing short of spectacular, showcasing the talents and enthusiasm of our students.

We extend our heartfelt appreciation to our dedicated colleagues who have worked tirelessly to bring these performances to life. The excitement and positive energy generated by these events has undoubtedly contributed to creating festive spirit across school.

We now look forward to Drama and Theatre Group's Christmas production, 'A Ray of Hope,' scheduled for the 18th and 19th of December.



Festive Cinema

Thursday 14th December @ 3.30pm

On Thursday 14th December, we are inviting children to attend a festive film night on our cinema-sized screen in the hall. The screening will commence immediately after school and will conclude at 5:30 pm.

To secure your child's place, please make payment via ParentPay at your earliest convenience. Please note that tickets are limited and allocation will be on a first-come, first-served basis.



Family Quiz Night

Friday 15th December @ 6.00pm

Are you a master of Christmas movies? Do you know the lyrics to every festive tune? If so, join us for our **VIRTUAL** Family Festive Quiz on Friday 16th December at 6pm.

If you want to attend, there is no need to book, simply join the Zoom session at 5.45pm on Friday. Please change your name to that of your team and have two devices with access to the internet available throughout the session.

Zoom Link: <https://us06web.zoom.us/j/89426433083?pwd=QiSQaI4GYzM6jhOXeq1iAbaBkr7BF.1>

Meeting ID: 894 2643 3083

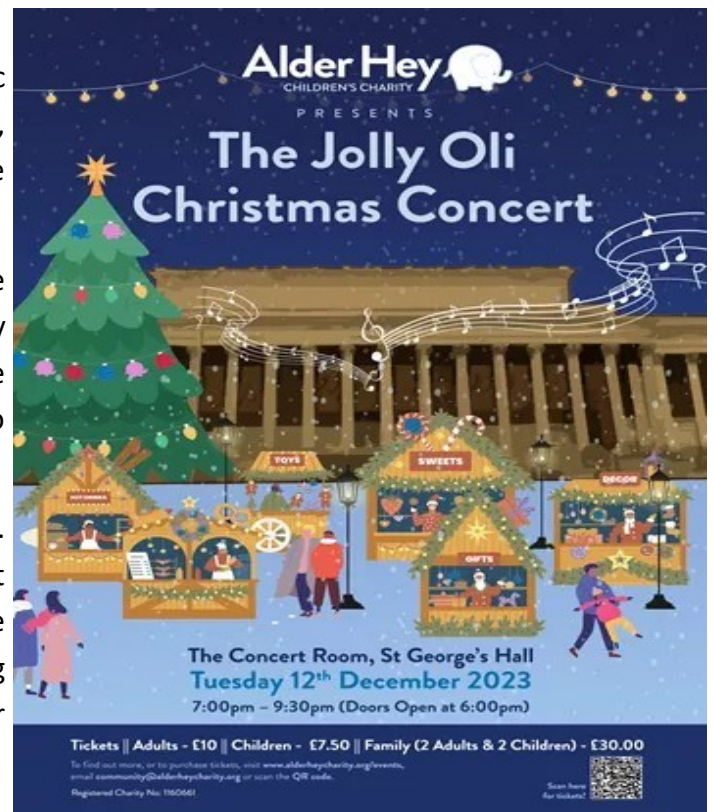
The passcode for this event will be shared via Parent App on Friday.

Choir Performance at St Georges Hall

Following the resounding success of Malvern's fantastic performance at the Liverpool Metropolitan Cathedral, we are thrilled to announce another opportunity for the choir to demonstrate their musical talent.

On Tuesday, 12th December, our wonderful choir will be gracing St George's Hall at Alder Hey's Children's Charity Jolly Oli Christmas Concert. The event, set to commence at 7:00 pm (with doors opening at 6:00 pm), promises to be a delightful evening filled with festive songs.

Ticket information can be found on the adjacent poster. We anticipate that the event will provide an excellent opportunity for families to come together and celebrate the festive season. We look forward to hopefully seeing many familiar faces in the audience supporting our talented pupils.



#Where **GREATNESS** grows

Attendance League Standings

POSITION	TEAM	PLAYED	WON	DRAW	Points
1	Wortho's Originals	9	6	2	26
2	The Pyneapples	9	7	1	24
3	Resilient Reception 2	9	6	1	22
4	Hayes' Heroes	9	6	0	20
5	Resilient Reception 1	9	6	0	18
6	O'Brien's Lions	9	4	1	16
7	The Ferocious Phillips	9	5	0	15
8	Brown's Busy Bees	9	5	0	15
9	Byrne's Bears	9	4	0	14
10	The Racing Carrs	9	4	0	14
11	The Fraser Frogs	9	3	0	11
12	Davo's Daring Donkeys	9	3	0	11
13	The Bulldogs	9	3	1	11
14	The Marvellous Matthews	9	1	0	3

Attendee of the Week

Our Attendee of the Week Award goes to Emily Breaky. Emily has been struggling with a cough for the last few weeks, but has insisted she is well enough to be in school. She has even been to the doctors and came straight back to school. This is the attitude that we love to see at Malvern!

Well done, Emily!



**Weekly School
Attendance**

95.7%

**Overall School
Attendance**

96%

**School Attendance
Target**

97%