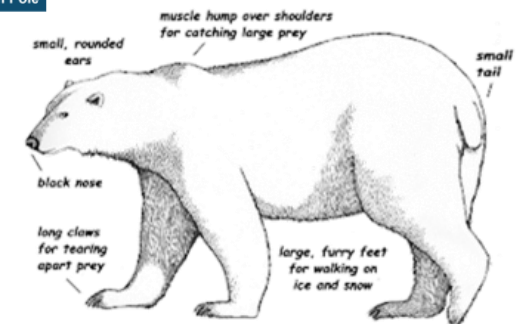
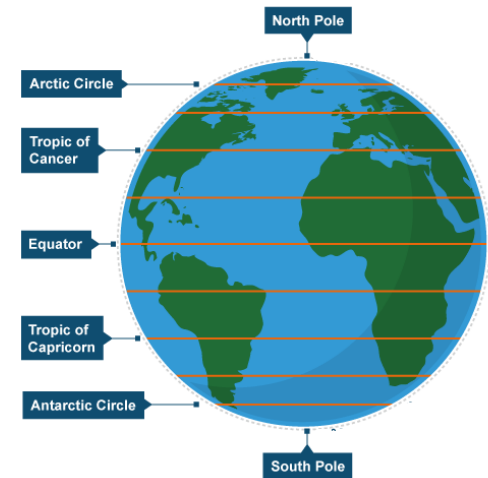


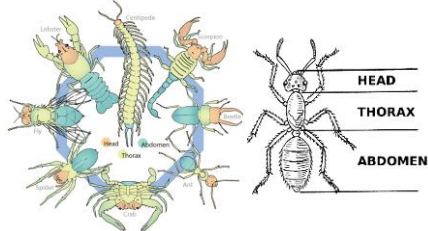
# Call of the Wild

Glossary - Geography	Definition
Glacier	A large body of ice
Biome	Region of earth with certain type of climate, vegetation and animals.
Vegetation Belt	Plant life within a certain area
Climate	Typical weather condition of a particular area
Greenwich Meridian	Is situated on 0° longitude and used to indicated time zones around the World

Glossary - Science	Definition
Micro-organism	Tiny living things, so small you need a microscope to see them
Adapt	A change to become suitable for environment
Evolve	Developing gradually - a change / improvement over time
Species	A group of living organisms that are the similar.



## Arthropods



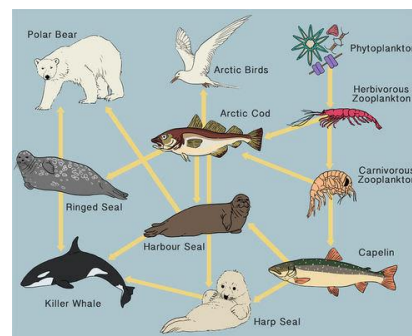
An animal with no internal spine, a body made of joined segments, and a hard covering, like a shell.

## Crustaceans

Animals that usually have a hard covering, or exoskeleton, and two pairs of antennas, or feelers.



## Arctic Food Web



## Classifying Animals

