





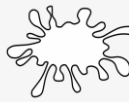



Pointillism (Painting with dots)



What is pointillism?	Pointillism is a painting technique which involves using small, painted dots to create areas of colour that together form a pattern or picture.
What is the Papunya Tula art movement?	This is a type of aboriginal art. The Papunya Tula style of painting derives from the artist's knowledge of the traditional sand and body painting associated with ceremony.
What are the primary colours?	Red, blue and yellow. 
What are the secondary colours?	Orange, green and purple. 
What are the tertiary colours?	Red-orange, yellow-orange, yellow-green, blue-green, blue-purple and red-purple.
What is a tint?	 A mixture of a colour with white, which makes it lighter.
What is a shade?	 A mixture of a colour with black, which makes it darker.
What is a tone?	 A mixture of a colour with grey added. (black and white makes grey)

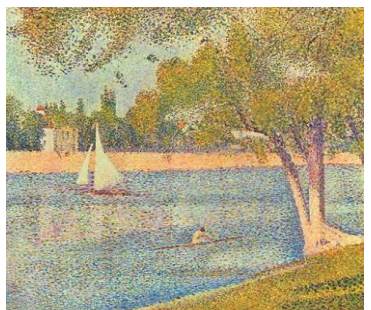
Black		charcoal, onyx, jet, ebony
White		pearl, cotton, porcelain
Pink		coral, salmon, dusky



Grffiti art



Aboriginal/indigenous



Georges Seurat



Dorothy Napangardi



Liverpool skyline