

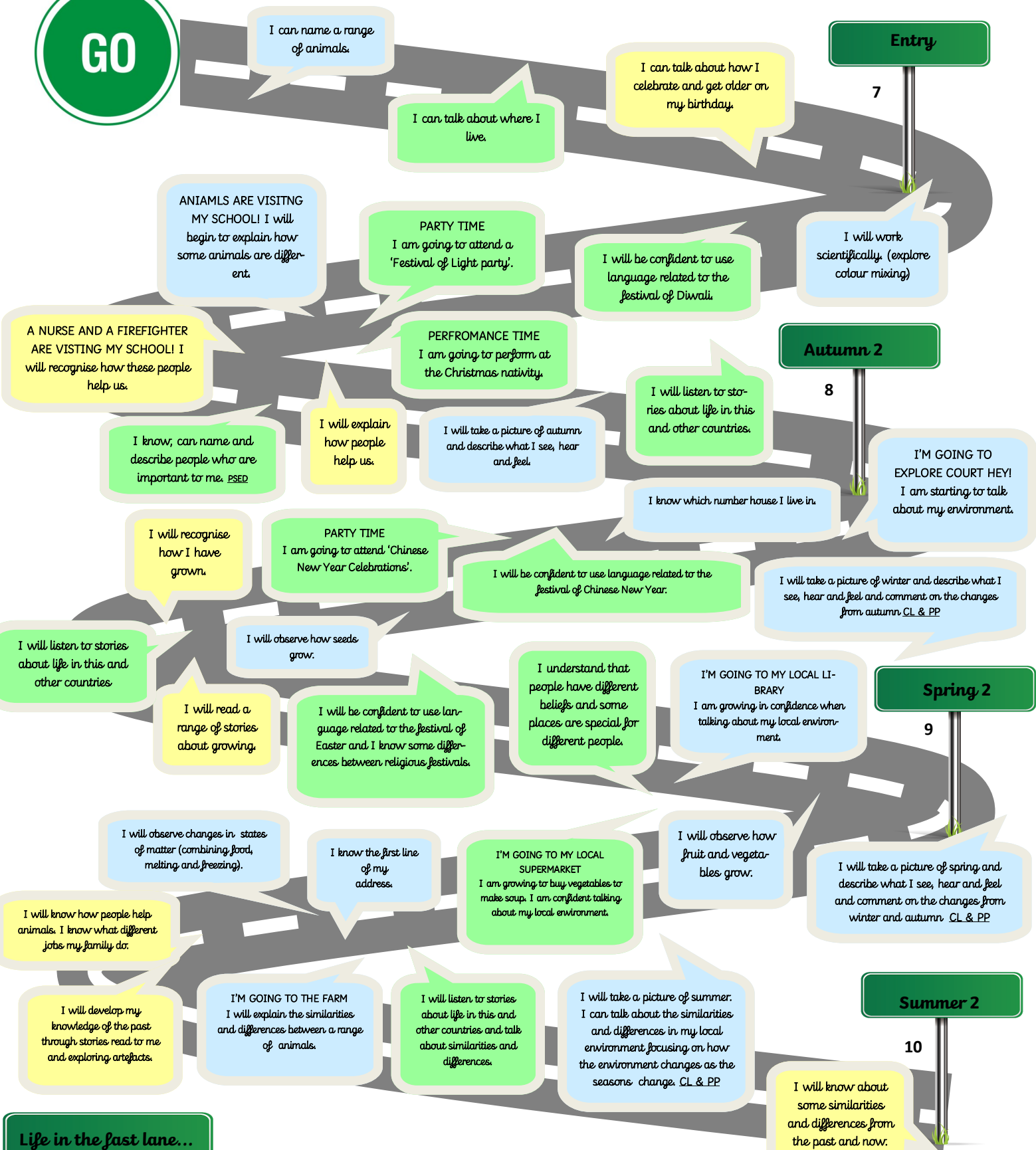


Malvern Primary School - Reception



Progress Route – Understanding the World

People Culture and Communities ■ Past and Present ■ & The Natural World ■



Life in the fast lane...

I will confidently talk about how humans change as they age and name each stage of development. I will use a range of scientific vocabulary to explain my own observations. I can talk in detail about: Diwali, Christmas, Chinese New Year, Easter and the similarities / differences between my own and other countries.

