

Newsletter



Dear Malvern Families,

As we come to the end of another remarkable year, I would like to take a moment to reflect on everything our community has achieved together. 2025 has been a year filled with opportunity, growth and shared success, and I am incredibly proud of what our children and staff continue to accomplish.

Throughout the year, Malvern pupils have excelled across many areas. From academic achievements and enrichment opportunities to sporting success, leadership development and creative performances, our children have embraced every challenge with enthusiasm and determination. We have celebrated national awards, outstanding attendance, musical and sporting triumphs and meaningful community projects. It was also a year in which the quality of education, care and leadership across the school was formally recognised at the highest level in every area, reflecting the strength of our provision and the dedication of our staff team.

As we reach the end of term, it has been wonderful to see the school come together once again through festive events and shared experiences. These moments remind us of the strength of our community and the importance of creating memories alongside learning. I would like to thank our staff for their unwavering dedication and professionalism. Their drive to go above and beyond ensures that Malvern continues to be a place where children thrive, feel valued and are encouraged to aim high. I am also grateful to our families for your continued support and trust. Working in close partnership remains one of our greatest strengths.

As we look ahead to 2026, there is much to be excited about. The year ahead will bring new opportunities, fresh beginnings and developments that will shape the future of Malvern. As always, we will look to our Malvern community for its continued support and partnership as we move forward together.

We look forward to welcoming everyone back on **Monday 5th January**. Until then, I wish you all a peaceful and enjoyable break and a very Happy New Year.

Mr James
Headteacher



Charity Fundraising for Dolcorsllwyn Hall

This year, our Junior Leadership Team selected Dolcorsllwyn Hall Association, known to many as Dolly Hall, as their chosen charity. Through donations raised across the autumn term, including our Toy Swap and Santa Dash, we were able to raise a fantastic £1,000 to support the charity with essential roof repairs.

It was a pleasure to welcome a group of trustees into school this week to meet with our Junior Leadership Team and formally receive the donation. Many members of the Junior Leadership Team visited Dolly Hall themselves last year as part of their Year 5 enrichment residential, which made the visit and the purpose behind the fundraising particularly meaningful.

While Malvern has worked in partnership with Dolly Hall for the past five years, the charity itself has supported children and young people from across Knowsley and beyond for over fifty years. During this time, it has provided opportunities for thousands of children to experience residential learning, outdoor education and personal development. In recent years alone, hundreds of Malvern pupils have benefited from this opportunity.

Dolly Hall is a registered charity and receives no direct funding, relying entirely on donations, fundraising and visitor income to maintain the building and continue its work. We will continue to support the charity throughout the remainder of the academic year. If any parents or families are able to offer practical skills, resources or financial support, we would be very pleased to share further information.

With our combined efforts, we hope to help ensure that Dolly Hall remains a place where future generations of Malvern children, and children across Knowsley, can continue to learn, grow and create lasting memories.



Spreading Festive Cheer

This week, our Junior Leadership Team supported the delivery of donations collected by the Malvern community to the local foodbank at St Luke's and St Jude's Church. Through the generosity of our families, more than 75kg of food and essential items were donated, helping to support local families during the festive period.

These contributions will make a meaningful difference at a time of year that can be particularly challenging for many. We would like to thank all families who donated so generously. Your support reflects the strong sense of compassion and community that sits at the heart of Malvern.

A special thank you also goes to our Junior Leadership Team, who played an important role in organising and delivering the donations. Their leadership and commitment to helping others continue to set a positive example and help spread festive cheer beyond our school gates.

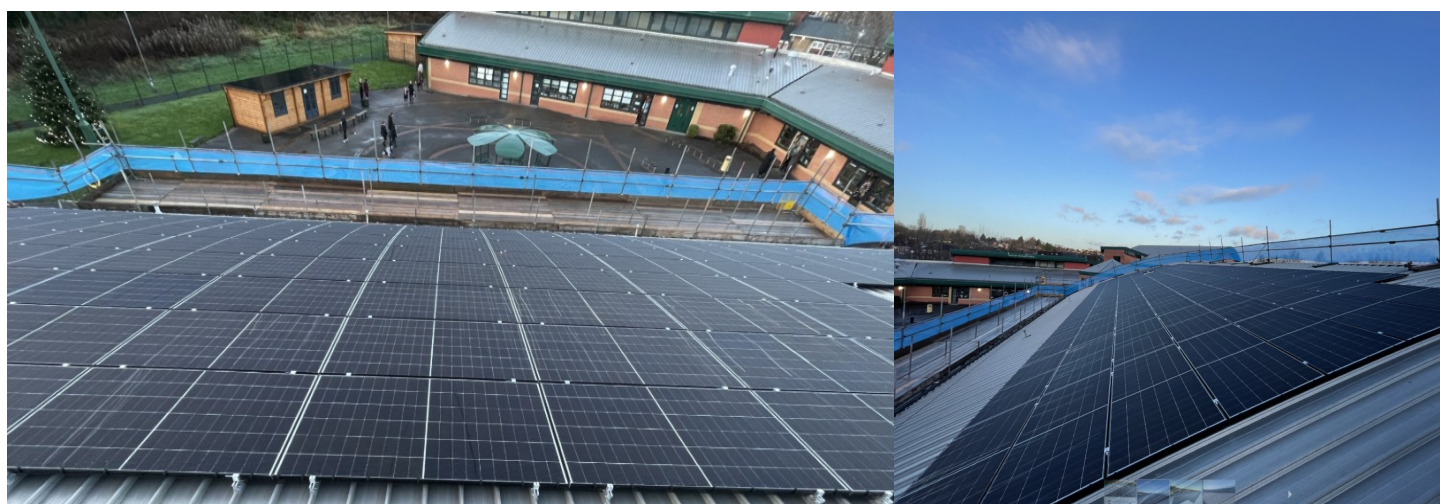


Solar Panel Installation Update

We are pleased to share that our solar panel installation is now in its final stages. The panels are fully in place and work will continue into Christmas week, with the installation scheduled to be completed on Christmas Eve. It feels fitting that this project will be completed just in time to deliver a lasting Christmas gift for our school community.

When children return in January, the system will be fully operational and generating electricity for the school. This marks an important milestone in our commitment to sustainability and reducing our environmental impact. The installation will not only support greener energy use but will also provide meaningful learning opportunities for pupils as they see renewable energy working first hand within their own school.

We are excited about the long term benefits this project will bring and look forward to sharing more about how it supports both our school and our wider environmental goals in the months ahead.



Christmas Competition Success

We are pleased to share that Malvern has been selected as the winner of a Christmas competition run by New Directions. Children who attend our wraparound provision were invited to submit design ideas as part of the competition and the winning design was created by Florrie in Year 2.

Florrie's entry stood out for its creativity, artistic flair and the confident way the whole page was used, which impressed the judging team. As a result, the school has won a £250 voucher, which will be used to enhance our wraparound provision for pupils. This is a fantastic achievement and a real credit to Florrie's imagination and creativity.

We would also like to thank Mrs Shields for her time and organisation in coordinating the competition and supporting the children throughout.



Arbor Transition Reminder

A reminder that from **Monday 5th January 2026**, Arbor will replace ParentPay and PA Connect. When we return after the Christmas break, all families will need to be using Arbor for communication, payments and bookings.

Arbor will be used for school messages, clubs, trips, meals and wraparound provision. Parents will need an active Arbor account to access these services.

We strongly encourage any families who have not yet activated their account to do so before the end of term. Parents with outstanding balances on ParentPay are also asked to settle these, as negative balances will transfer across and may restrict access.

If you require support, please contact the school office this week and a member of staff will be happy to help.



Christmas Raffle Prize Winners

A heartfelt thank you goes out to all the individuals and companies from the community who generously supported us by providing prizes, as well as to all the families who bought tickets. Hopefully, the prizes have truly made Christmas special for the winning families.



School Games National Santa Dash

Malvern pupils took part in the School Games National Santa Dash, showing great enthusiasm, energy and teamwork throughout the event. It was wonderful to see so many children getting involved, embracing the festive spirit and giving their best effort.

The event also supported our chosen charity, Dolcorsllwyn Hall, with funds raised contributing towards essential repairs and ongoing work at the hall. The children took real pride in knowing their participation would help make a difference.

A huge thank you to Mr Hunt for his organisation and leadership in making the event such a success. The Santa Dash was a fantastic example of how sport, community and charitable giving come together at Malvern.



Here On Time Reward Trip

At Malvern, punctuality matters. To encourage and celebrate arriving on time, every child who arrives punctually is entered into our Here On Time (HOT) box. Each week, a lucky winner is drawn and, at the end of the term, all HOT winners receive a special reward.

Our Here On Time winners were treated to a magical and memorable afternoon at the pantomime, watching Jack and the Beanstalk. Twelve pupils earned their place on this festive trip simply by showing excellent punctuality and arriving at school on time each day. The children enjoyed a lively performance filled with laughter, music and all the fun of a traditional panto. Their excitement was clear throughout, and it was a pleasure to reward their commitment with such a special experience.



50 Cube Rewards Celebration

As part of our 50 Cube rewards, children who consistently uphold our school values enjoyed a range of special treats. These rewards recognise sustained effort, positive choices and a strong commitment to being the best they can be. One group of children chose to enjoy a pantomime performance in school, which proved to be a real highlight. The performance by Agent Frostbite was full of humour and energy, keeping everyone entertained from start to finish. The children thoroughly enjoyed the experience and loved being able to relax and enjoy a live performance as a reward for their hard work.

Other pupils took part in a festive Christmas Crafts session, where the room was filled with creativity and seasonal cheer. Children created snowmen, Christmas cards and Christmas trees, using a range of materials and proudly sharing their finished designs with staff and friends. It was wonderful to see the care, effort and pride they showed in their work. Children also had the opportunity to take part in a festive football competition, enjoying teamwork, friendly competition and plenty of enthusiasm. This added another exciting option to the range of rewards on offer.

Well done to all the children who earned their 50 Cube reward. Your commitment and positive attitudes truly shine. Even more 50 Cube rewards are planned for next term, so keep working hard and aiming high.



Show Racism the Red Card at Liverpool Football Club

Malvern pupils recently took part in the Show Racism the Red Card event at Liverpool Football Club. Throughout the day, they engaged in meaningful learning about racism and its impact, explored the powerful messages behind the campaign and took part in an informative tour of the stadium.

A real highlight of the visit was the opportunity to meet football legends, including John Barnes, which made the experience especially memorable. The day was both educational and inspiring, reinforcing the importance of equality, respect and standing up against discrimination in all aspects of life.



Football Triumph at LFC Primary Stars Event

Our Key Stage 2 football team enjoyed outstanding success at the LFC Primary Stars event, finishing the tournament unbeaten. The team played seven matches and won all seven, demonstrating excellent teamwork, skill and determination throughout.

Their effort, commitment and sportsmanship were impressive, and they represented Malvern with pride. A fantastic achievement and well deserved success for the whole team.



Reception Class Admissions 2026-2027

If your child's date of birth falls on or between 1 September 2021 and 31 August 2022, now is the time to apply for reception class place in school for September 2026. Everyone must apply between 12 September 2025 and 15 January 2026 by completing the application form of the Local Authority in which you live.

This is the main link to the On-Line Parent Portal can be found here:

<https://www.knowsley.gov.uk/education-and-schools/school-admissions/apply-primary-school-september-2026/apply-primary-school>

If you require any support please contact Knowsley Admissions Team via the contact details below:

Email: schooladmissions@knowsley.gov.uk

Telephone : 0151 443 5142/5143



Welcome

Dear Parents and Carers

Deciding what school you would prefer your child to attend when they begin their primary school career is a very important decision to make. During the autumn, Knowsley parents and carers will make decisions about their school preferences and can apply for up to three schools for their child by early January 2026.

Before doing this, we would encourage you to go and see for yourself all the opportunities Knowsley schools can offer. Our head teachers and staff will be delighted to meet with you and show how pupils are benefiting from the high standards of teaching and learning delivered across the primary curriculum. All staff wish to work in partnership with you and provide your child with the best possible education. Our schools are committed to helping children reach their potential, whatever their race, sex, religion or disability.

We want to assist you in making a very important decision for your child's future and can help in a number of ways:

- this booklet gives you information about all the Knowsley primary schools and how the application and allocation process works, please read it carefully before making your application and seek advice if you have any further questions.
- we encourage parents/carers to be aware of and understand the oversubscription policy for the schools they are applying to and use all three preferences wisely – this will not create any disadvantage but will help to avoid unexpected outcomes for your child.
- we recommend all families apply using the secure online portal at www.knowsley.gov.uk by the national closing date of **15 January 2026**.
- Knowsley school admissions service can provide further information and guidance by telephone (0151) 443 5143 / 5142 / 3372 or email schooladmissions@knowsley.gov.uk.

Finally, we want to assure parents/carers of the commitment of the Council to make Knowsley the best place to be educated and build a high quality, sustainable and successful learning community, and to wish every child a successful primary education journey.

 Apply online
WWW.KNOWSLEY.GOV.UK


Knowsley Council



Hilary Brooks
Interim Executive Director
(Children's Services)



Cllr David Loneragan
Cabinet Member for
Children's Services

